



# MARIAN'S

MANA

*Oran Park*





Welcome to Marian's Mana, a distinctive  
urban village unlike any other.





Artist Impression – Central Ave, Nolan precinct

Welcome to Marian's Mana.

Marian was a person who loved to welcome people and is dear to Oran Park. Nothing pleased her more than hosting guests, cooking, sitting together to have a chat, often with a cheeky quip. She loved her garden, collecting books, reading and was fond of Australian artists.

In the local Aboriginal Dharawal language, Mana means 'meeting place'.

Please feel at home, just as Marian did, to explore the many meeting places within Marian's Mana.

Marian's Mana offers a tranquil lifestyle nestled among manicured gardens and communal spaces, all professionally maintained under a Community Title Scheme.

Located near Oran Park's most popular amenities and shopping precinct, Marian's Mana invites you to enjoy an address that blends nature with urban conveniences. It's a place you'll want to call home.



## AN URBAN LIFESTYLE IN A UNIQUE GARDEN SETTING



Artist Impression – Nolan Walk

Marian's Mana is a prestigious master-planned community offering architecturally designed residences in one of South-West Sydney's fastest-growing neighbourhoods.

Nestled between the Oran Park Town Centre among its many amenities and the proposed Lake Pondicherry precinct with its foreshores, boardwalks, cafés and activity spaces – this family-friendly neighbourhood brings the best of both worlds to your every day.

With easy access to Brooking Park, Whiteman Park, Dawson-Damer Park and the proposed 10 hectare lake, you'll always find the perfect spot for a walk, picnic or quiet reading spot, moments from your front door.



Detail – Podium Mural, Oran Park Drive



Artist Impression – Nolan Walk



# EXCEPTIONAL ACCESS TO A WORLD OF LEISURE AND FUN



Marian's Mana is moments away from exciting entertainment, dining and relaxation opportunities. There's so much to love and enjoy:

- Oran Park Library and Community Centre
- The expanded Podium Shopping Centre including 'The Graze' food court
- The leisure centre, complete with 50 metre swimming pool, spa, sauna and water river
- Sporting facilities including Doohan Reserve, Brabham Reserve and Gardner Reserve
- Play spaces like Julia Reserve Skate Park and Dawson-Damer Splash Park
- Our ever-growing Eat Street
- Oran Park Hotel, Sydney's newest 'super' pub



As our community evolves, residents can look forward to exciting additions:

- Lake Pondicherry and surrounding features
- Atura Hotel, soon to be a key destination for tourists and business travellers alike with the launch of Western Sydney Airport in 2026
- Our Eat Street is still growing with further expansion plans featuring a great range of cafés, restaurants and takeaway eateries
- New venues and restaurants throughout the Town Centre

Plus much more to come.







## RELAXATION, FITNESS AND RECREATION, YOUR WAY...

Marian's Mana inspires an active metropolitan lifestyle while maintaining the benefits of a suburban neighbourhood.

You'll be a stroll away from the award-winning Dawson-Damer Park – the home of Camden's largest splash park. It boasts 30 water features along with other fun activities including basketball, trampolines, table tennis and even a ninja warrior course.



Dawson-Damer Splash Park



Artist Impression - Brooking Park



Julia Reserve Youth Precinct

Conveniently located adjacent to the Town Centre, the award-winning Julia Reserve Youth Precinct contains a 2.5 hectare skate park. This versatile park features a parkour zone, full-sized basketball court, table tennis area and plenty of open space to kick around a ball or go for a run.

If a leisurely stroll or bike ride is more your speed, Marian's Mana is connected to a series of wide and beautiful interconnected walkways. These link the Town Centre to the proposed Lake Pondicherry via the Ron's Creek walking paths. While the existing walkways already provide impressive connectivity, once the lake is completed, they'll stretch for several kilometres without pedestrians needing to cross a street!



Part of Oran Park Eat Street





Artist Impression – Marian's Mana, looking towards the Oran Park Town Centre





Artist Impression - Marian's Mana, looking towards Lake Pondicherry



## A NEIGHBOURHOOD DESIGNED AROUND YOU

Marian's Mana has been carefully curated by an experienced team of architects, urban designers and technical specialists to create an Urban Village. This integrates architecture and landscape in a way that's simply not possible in a traditional suburb and culminates in a neighbourhood that you will proudly call home.

Living rooms, generous front porches and protected gardens, together with strategically placed balconies all celebrate broad vistas across open spaces such as Brooking Park, Dawson-Damer Park, Ron's Creek and Whiteman Park.



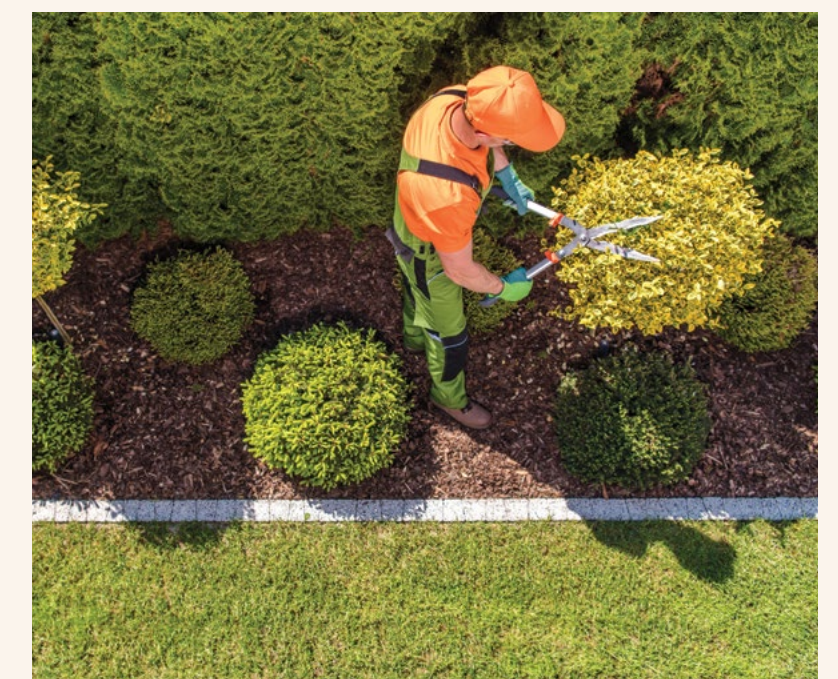
Artist Impression - three-storey townhomes



Artist Impression - Pocket Park, Namatjira precinct

Laneways have been designed to be a private route home to your own garage, lined with trees and landscaping amidst interesting buildings of different shapes and sizes. By removing driveways from the streetscapes, the front yard becomes a useful extension of your home and lifestyle rather than being dominated by pavement and cars.

The special character of Marian's Mana is identified in unique entry statements, including signage and generous landscapes. Wide avenues uninterrupted by driveways provide ample parking on both sides of the street without restricting two-way traffic movement, creating a safe, shaded and pleasant place for pedestrians. Delightful pocket parks punctuate a network of pedestrian pathways. These are the elements and places where a community is made as people enjoy time with friends and family in the natural course of daily life.





# HOW YOU BENEFIT FROM THE COMMUNITY TITLE SCHEME

Marian's Mana is managed by a Community Title Scheme. This means that residents benefit from a range of advantages for a quarterly fee. Marian's Mana gives you easy access to a range of community amenities while still being tucked away from the hustle and bustle of urban life. This scheme provides quality finishes around the neighbourhood with superbly manicured and additional landscape features unique to Marian's Mana.

Private contractors will maintain verges, gardens, walkways and open spaces. These are regularly maintained to a premium standard, making Marian's Mana stand out from surrounding areas. This exclusive approach to landscape maintenance will ensure the community develops into a cool and weed-free neighbourhood. Not only do these services help in maintaining your property's value, they also impact the way your neighbourhood evolves over time.



## ENJOY LUSH SURROUNDS

- Marian's Mana benefits include
- Mowing and edging of all public lawns (street verges and open spaces)
  - Premium pavement finishes in key locations
  - Regular mulching, watering and maintenance of landscaped areas to ensure they remain healthy and weed-free
  - Trees and plants maintained and replaced as required

This premium approach to landscape maintenance not only protects the high level of landscaping in the community, it also underpins Marian's Mana's ambition to be a prestige community that stands out from its surrounding areas, while supporting the value of your investment.



# THE PRECINCTS

Marian’s Mana is a rich and diverse collection of curated homes, thoughtfully designed to celebrate creative talents who have had an impact on the fabric of Australian daily life. With precincts named after Australian artists Arthur Streeton, Sidney Nolan, Albert Namatjira, Margaret Preston and Alan D Baker – and similar naming conventions for other village locations – a sense of identity and purpose is created for the community, tying it to the broader Australian cultural narrative.

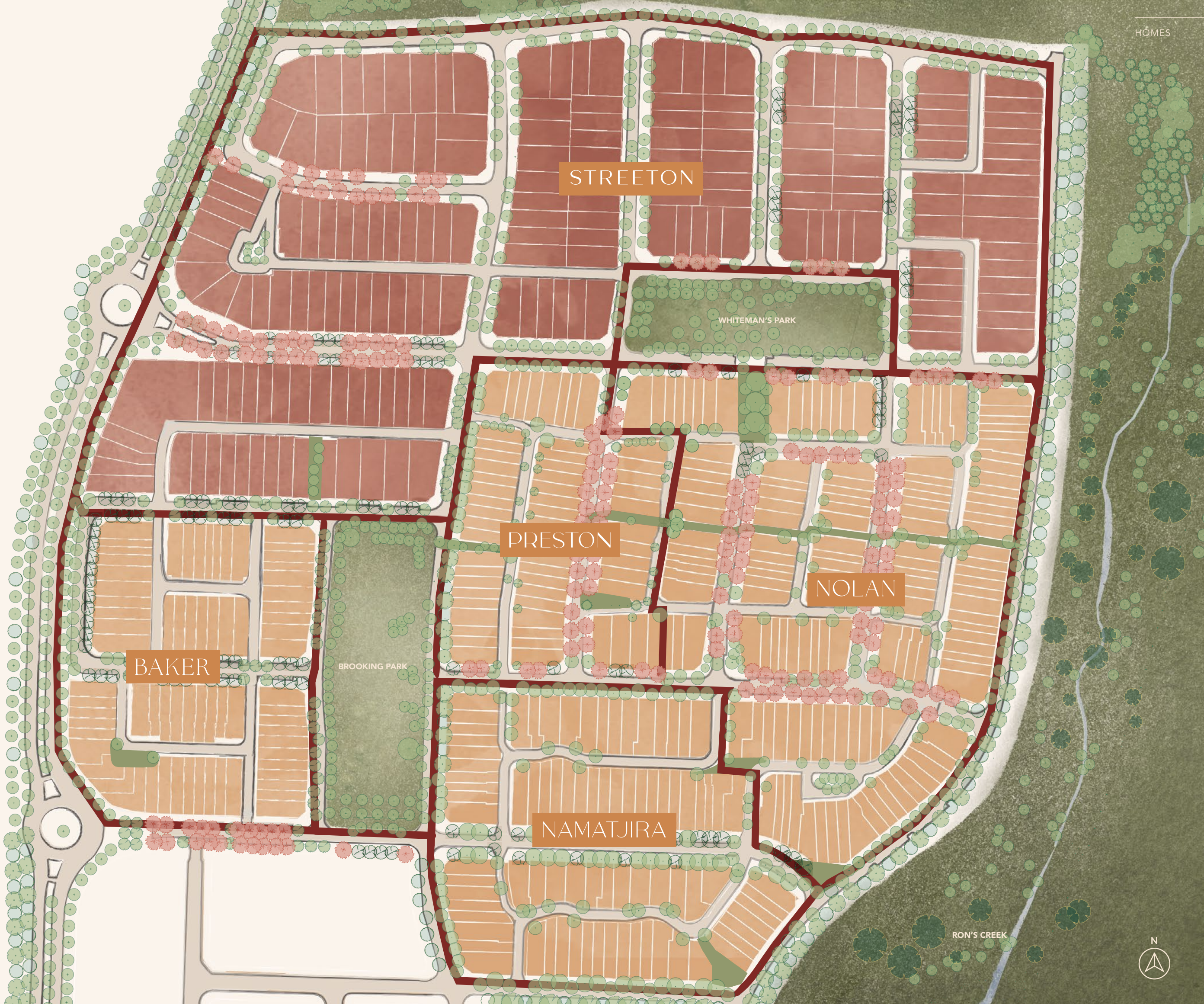
Marian’s Mana is a homage paid to a wide array of artists from different disciplines – spanning modernist painters, writers, photographers, and contemporary artists – demonstrates a comprehensive and inclusive approach to celebrating creativity. Creators – such as the modernist painters Charles Blackman and Albert Tucker, writers like Colleen McCulloch and Miles Franklin, photographers Emily Bentley and Helmut Newton plus contemporary artists like Martin Sharp – all demonstrate a commitment to honouring a broad spectrum of creative practitioners. The emphasis on diverse styles – from sculptors like Rayner Hoff, Eleonore Lange and Bertram Mackennal to painters as diverse as Leonard Long and Jeffrey Smart – further highlights the depth of artistic expression within the Australian cultural landscape.

This commitment celebrates a broad spectrum of creative practitioners that reflects a deep appreciation for the diversity of artistic expression in Marian’s Mana. The integration of these artistic influences into the architecture and design of the curated homes suggests a unique living experience that is immersive and reflective of the community’s commitment to cultural heritage.

Marian’s Mana, with its vibrant and diverse cultural atmosphere, has the potential to serve as a hub for creative collaboration, fostering a sense of pride and appreciation for the contributions of Australian artists. It seems poised to become not just a residential space but a dynamic and culturally rich urban village, connecting residents through their shared love for art and cultural heritage.

## KEY

- Prestigious medium-density townhomes
- Land for bespoke free-standing luxury family homes



### STREETON

Greenfields Development Co.  
177 dwellings  
Land for free-standing luxury family homes

### NOLAN

Creation Homes  
165 dwellings  
Medium density

### NAMATJIRA

Wisdom Homes  
88 dwellings  
Medium density

### PRESTON

Firststyle Homes  
73 dwellings  
Medium density

### BAKER

Everyday Homes  
72 dwellings  
Medium density



# STREETON

BY  GREENFIELDS

Arthur Streeton is one of the doyens of the Australian art world. The Streeton precinct is the most northern area of the Marian's Mana precinct. It comprises of land for bespoke free-standing family residences and built architectural homes.

It has all the benefits of the Marian's Mana Community Title Scheme, where you can build a bespoke, custom home on larger blocks in accordance with the Streeton Design Guidelines.



Streeton, like all of Marian's Mana, has fantastic access to Whiteman Park, Brooking Park and Ron's Creek and has magnificent streetscapes which will characterise the precinct's identity. It's about creating a connected environment where residents can come together to meet and make memories.



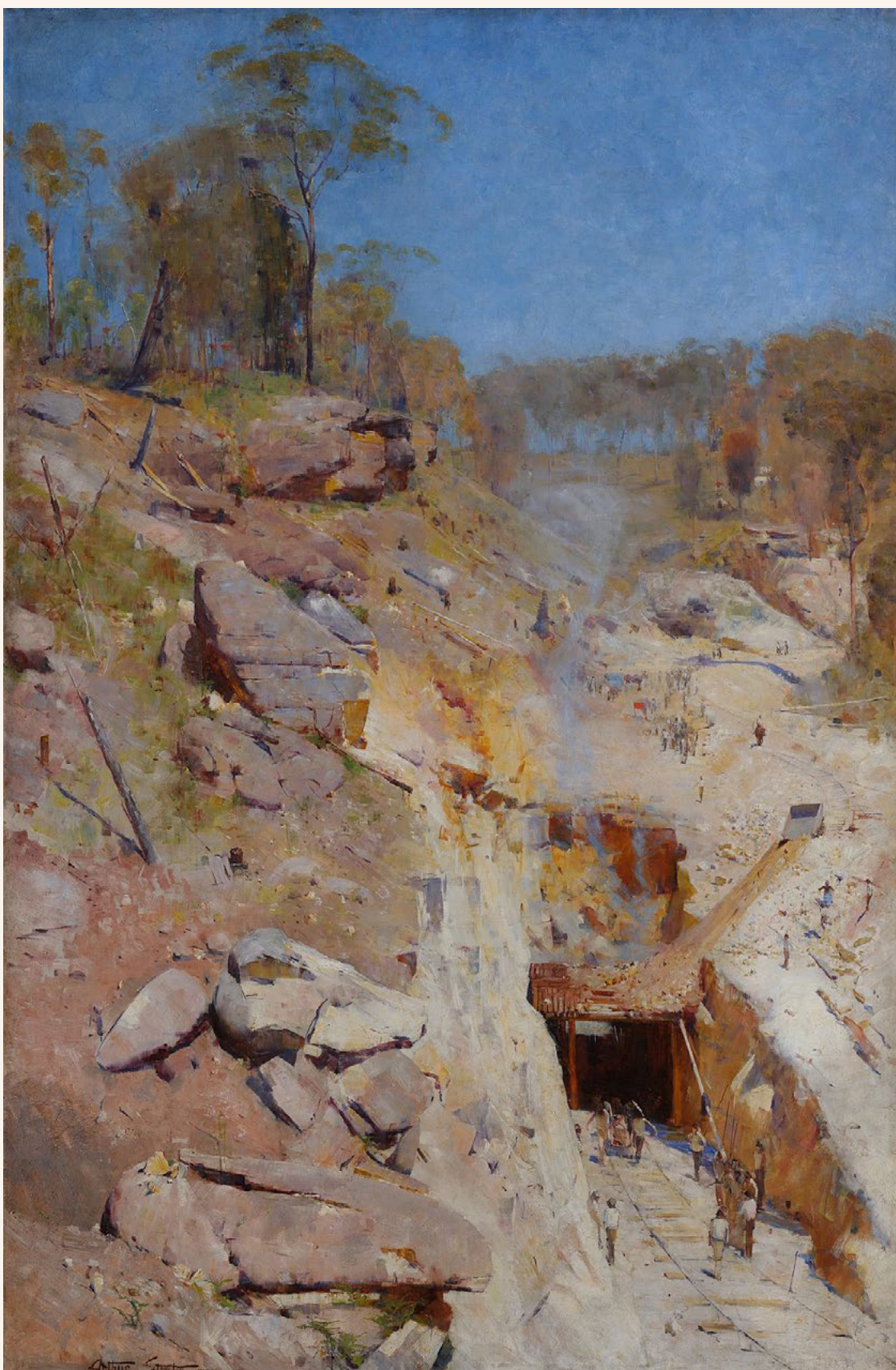


ARTIST PROFILE

# STREETON

Arthur Streeton (1867 – 1943)

Sir Arthur Ernest Streeton was an Australian landscape painter and a leading member of the Heidelberg School.



Arthur Streeton  
*Fire's on, 1891*



Arthur Streeton  
*From my camp (Sirius Cove), 1896*

Arthur Streeton travelled to the formerly rural area of Heidelberg in the late 1880s, to begin painting “plein air”. This approach aimed to depict Australia’s unique qualities – the light, heat, space and distance. These attributes are embodied throughout the Streeton precinct of Marian’s Mana.

This marked the beginning of Australia’s famous “Heidelberg School – Australian Impressionism” – and the study of light and colour. Qualities reflected in Marian’s Mana – the soft, pale, earthy tones, curated textures, creatively designed paths and trails leading to places of reflection.

Just as Marian’s Mana is set to become an iconic landmark in South-West Sydney’s urban evolution, Streeton – along with other artists like Roberts, McCubbin, Conder – created the groundbreaking “9 x 5” Impression Exhibition in Melbourne. Streeton continued to make significant contributions to Australian art, winning the Wynne Prize in 1928.

In 1937, he was knighted for his services to the arts.

Sir Arthur Streeton passed away at his property in Olinda, Victoria, in 1943.

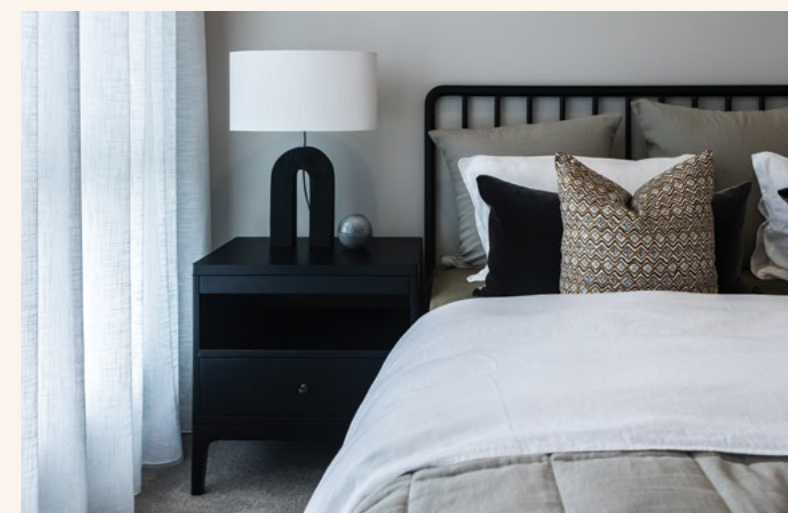


# NOLAN

BY  creationhomes

Named after one of Australia's leading contemporary artists, Sir Sidney Robert Nolan, the Nolan precinct is bordered by Central Ave and Marian Ave and sits alongside the Ron's Creek greenspace.

Greenfields and DC8 Studio Architects in collaboration with Creation Homes are creating a housing precinct focused on liveability, connection and community. Within the Nolan precinct, homes are carefully crafted to maximise internal amenity and curated to engage community connection with local spaces. A north-south central walk with smaller, east-west green links provides opportunities for people to interact and connect through these peaceful community nodes. With all these strategic design elements, the Nolan precinct will be a place for people; a place of belonging.



Like the precinct's namesake, these townhomes are designed with a striking contemporary look. Creation Homes have designed all their townhomes to ensure timeless liveability – these homes will stand the test of time and serve as a comfortable, efficient, beautiful space for generations.





ARTIST PROFILE

# NOLAN

Sidney Nolan (1917 – 1992)

In 1924, after several years working in advertising and evening night classes, he joined the “Heide Circle”, a loose group of young Australian modernist painters supported by the art patrons John and Sunday Reed. Nolan lived for some time with the Reeds at their farm “Heide”. It was here he started to create his most well-known work, the “Ned Kelly” series.

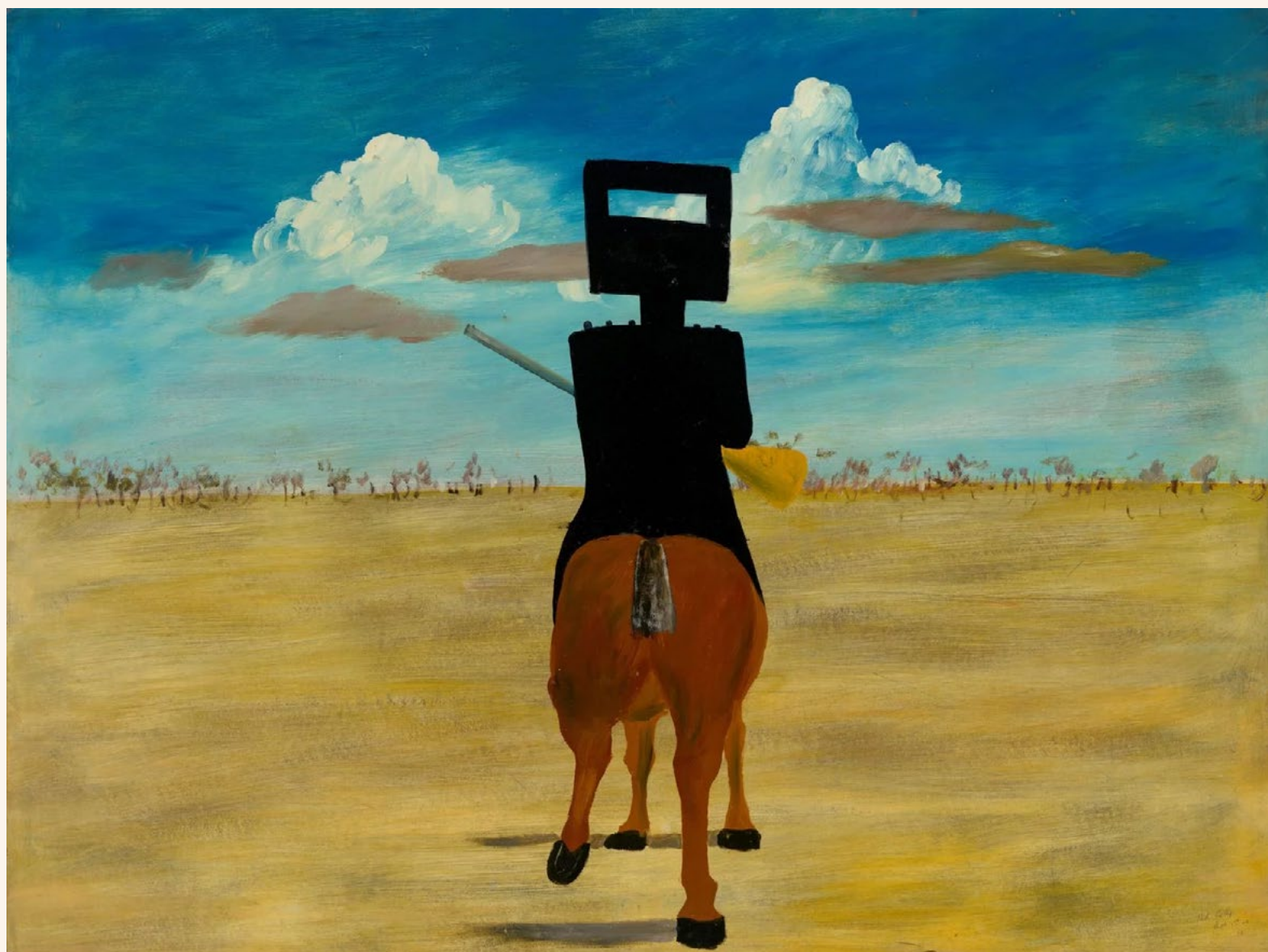
Nolan used the “Ned Kelly” series as a new and innovative way of painting the Australian landscape. In much the same way, Marian’s Mana is a unique and contemporary interpretation by Creation Homes to style and innovation throughout this modern architectural precinct.

At the heart of the Nolan precinct is the Marian’s Mana pocket park, conveniently connecting Whiteman Park to the Town Centre through Sidney Walk. Nolan’s work is characterised by his fluid approach, never really settling on a single style, leading to a diverse series of styles, finishes, textures and colour but most importantly different outlooks.

Sidney Nolan began his art career at the tender age of 14 and became one of Australia’s best known contemporary artists.

The Nolan precinct is similar in approach where different perspectives have been considered throughout the Nolan precinct, particularly the large three-storey townhomes overlooking Ron’s Creek or the homes bordering Sidney Walk with its intimate alcoves.

Sidney Nolan died in London in 1992 at the age of 75.



Sidney Nolan  
*Ned Kelly, 1949*  
© The Sidney Nolan Trust | All rights reserved, DACS 2024



Sidney Nolan  
*Leda and swan, circa 1960*  
© The Sidney Nolan Trust | All rights reserved, DACS 2024



# NAMATJIRA



Arguably one of the country's most influential and famous Indigenous artists, Albert Namatjira was a prolific landscape artist of central Australia. Located on the southern edge of Marian's Mana, nestled between Brooking Park and Ron's Creek, Namatjira is the closest precinct to the Town Centre.

In the Namatjira precinct, DC8 Studio Architects and the Wisdom Homes team have collaborated to deliver a place to live and grow. With homes presenting to parks, green corridor streets and pedestrian links, the opportunity to maximise a tranquil outlook has been key in the design phase. The homes are purposely designed to maximise internal sense of space, privacy, streetscape presence and identity within the broader Marian's Mana precinct.



Artist Impression - Wisdom Townhomes opposite Brooking Park



Artist Impression - Front garden, Namatjira precinct



The Namatjira precinct is imbued with a colour palette reflecting warm central Australian colours and soft neutral tones. The Namatjira townhomes have a design sensibility along with quality construction and inclusions, trademarks of Wisdom Homes. The central location of the Namatjira precinct typifies the ease and convenience of the lifestyle in this precinct.





ARTIST PROFILE

# NAMATJIRA

Albert Namatjira (1902 – 1959)

Albert Namatjira was born in 1902 in the MacDonald Ranges in Central Australia, on Western Arrernte land. He became the most famous Indigenous artist of the late 20th century.



Albert Namatjira  
Catherine Creek, 1950  
© Namatjira Legacy Trust/Copyright Agency, 2024



Albert Namatjira  
Mangaraka Gorge  
After Rain,  
1950 © Namatjira  
Legacy Trust/  
Copyright  
Agency, 2024

One of Australia’s finest Indigenous artists, Namatjira created the artistic style later named the “Hermannsburg School”. In 1938, at 36 years of age, he held his first, acclaimed exhibition in Melbourne which became the first of many solo exhibitions.

Namatjira’s work portrays colourful yet subtle landscapes using muted tones across a broad range of contrasting colours – a Western art technique adapted by the Hermannsburg School artists. The landscapes are often bathed in sunlight just like the residences within

the Namatjira precinct. Predominantly north/south in orientation, these homes have been designed to capture the sun and fill the private open spaces in the front and back with an abundance of natural light. The Namatjira precinct also boasts several pocket parks, including a wonderful pocket park that acts as a gateway for pedestrians walking between Marian’s Mana and the Oran Park Town Centre.

In 1959, Albert Namatjira died, aged 57, in Alice Springs.



# PRESTON

BY **FIRSTYLE**  
HOMES

Margaret Preston, a cherished Australian artist celebrated for her extensive body of work spanning still life, woodcuts, and vibrant colourful pieces, left an enduring mark on the art world. The Preston precinct is also central to the Marian's Mana precinct.



Throughout the Preston precinct, Firststyle's approach to architectural design, construction techniques and material selection comes into play – ensuring these townhomes will be built to high levels of form and function. Like the precinct's namesake, Margaret Preston, the area follows her passion for quality design and drafting, strong images and striking colour.

A commitment to quality is evident throughout the whole of Marian's Mana. Firststyle believes that communication, value for money and a quality product are important factors when developing homes that will last generations.





ARTIST PROFILE

# PRESTON

Margaret Preston (1875 – 1963)

Margaret Preston, a prolific Australian painter, dedicated her artistic endeavours to the exploration of colour and the creation of still life works.

Preston’s artistic journey began in high school, followed by private lessons with the renowned Australian artist William Lister Lister. She further honed her skills at the prestigious National Gallery of Victoria Art School under the tutelage of Frederick McCubbin, earning the school’s coveted “Still Life Scholarship.” Subsequently, Preston studied under both Harry Pelling Gill and Hans Heysen.

Having embarked on an international journey in 1903, Preston exhibited her work at The Salon in Paris in 1905 and 1906, fostering a lasting fascination with Japanese art techniques. Her return to Australia in 1907 marked the beginning of a transformative period in her career. Amidst the war years, she relocated to Britain, actively contributing to the rehabilitation of soldiers with PTSD through artistic endeavours, particularly pottery.



Margaret Preston  
Summer, 1919  
© Margaret Preston  
/ Copyright Agency  
2024



Margaret Preston  
The Bridge from  
North Shore, 1932  
© Margaret Preston  
/ Copyright Agency  
2024

In 1919, Margaret McPherson married Bill Preston, settling in the Sydney harbourside suburb of Mosman. Around this time, the Art Gallery of NSW acquired her painting “Summer” and commissioned “Self-portrait”, solidifying Preston’s status as Australia’s foremost female artist over the following decade. Driven by a fervent desire to establish a distinct national art identity, Preston embraced a modernist style, evident in her prints created through woodcuts, linocuts and monotypes.

The three-storey townhomes facing Brooking Park stand as architectural landmarks inspired by Preston’s enduring artistic themes, offering a robust backdrop to the park’s serene landscape. With living spaces on both the ground and first floor, complemented by porches and balconies, these homes seamlessly integrate with their parkside surroundings. Margaret Preston’s creative contributions persisted until her final years, leaving an indelible legacy in the art world. She passed away aged 88 in 1963, at her Mosman home.



# BAKER



Named after Alan D Baker – a prolific, local, Camden based award-winning Australian artist – the Baker precinct, situated along the western border of Marian's Mana, is defined by Brooking Park to the east and Oran Park Drive to the west.



Artist Impression – Unique corner home design by Everyday



Within the precinct, Everyday Homes, a distinguished company with over 40 years of experience in crafting stylish and contemporary residences, has created a collection of townhomes. Much like Baker's artistry, these dwellings exude vibrancy and meticulous detail, both in their architectural design and the thoughtfully landscaped streetscapes. Notably, the placement of balconies and living spaces has been carefully considered to celebrate scenic views across Brooking Park.





ARTIST PROFILE

# BAKER

Alan D. Baker (1914 – 1987)

Alan D. Baker – to whom the Alan Baker Art Gallery in Camden is dedicated – was a prolific local artist. A 26-time Archibald Prize finalist, he was accomplished in portraiture and landscape painting but for many, he is best remembered for his captivating floral still lifes.

Most people will be very familiar with Alan's superb "Hotel Posters" commissioned by the various breweries around NSW. Alan Baker's work decorated some of the best know hotels in the state including prestigious hotels such as The Greengate Hotel at Killara, Mansions Hotel at Kings Cross, The Great Southern Hotel at Newcastle and The Cecil at Cronulla, all commissioned by Tooths Brewery to decorate the dining rooms of these well-known landmarks.

Alan Baker concentrated on landscapes, seascapes and still life; primarily flowers, often grown in his beloved garden at The Oaks.

His works are in the New South Wales Art Gallery, National Gallery of Australia in Canberra, Queensland Institute of Technology, the Hinton collection at Armidale and also within many private and public collections.



Alan Douglas Baker  
*Almond Blossom*, c1980  
© Alan Baker Art Gallery Trust | All rights reserved



Alan Douglas Baker  
*The Struggle for Survival*, c1980  
© Alan Baker Art Gallery Trust | All rights reserved

Alan Baker was a Fellow and Vice President of the Royal Art Society of New South Wales and was on its Council for many years. He was also a trustee of the Marshall Bequest at the New South Wales Art Gallery.

In 1987, Alan Baker died at The Oaks at the age of 73.





A lifestyle of unparalleled excellence awaits.





**ORAN PARK**



Oran Park Sales Office  
340 Oran Park Drive, Oran Park NSW 2570

Call 02 9043 7500  
[salesoffice@greenfields.net.au](mailto:salesoffice@greenfields.net.au)

**MARIANSMANA.COM.AU**